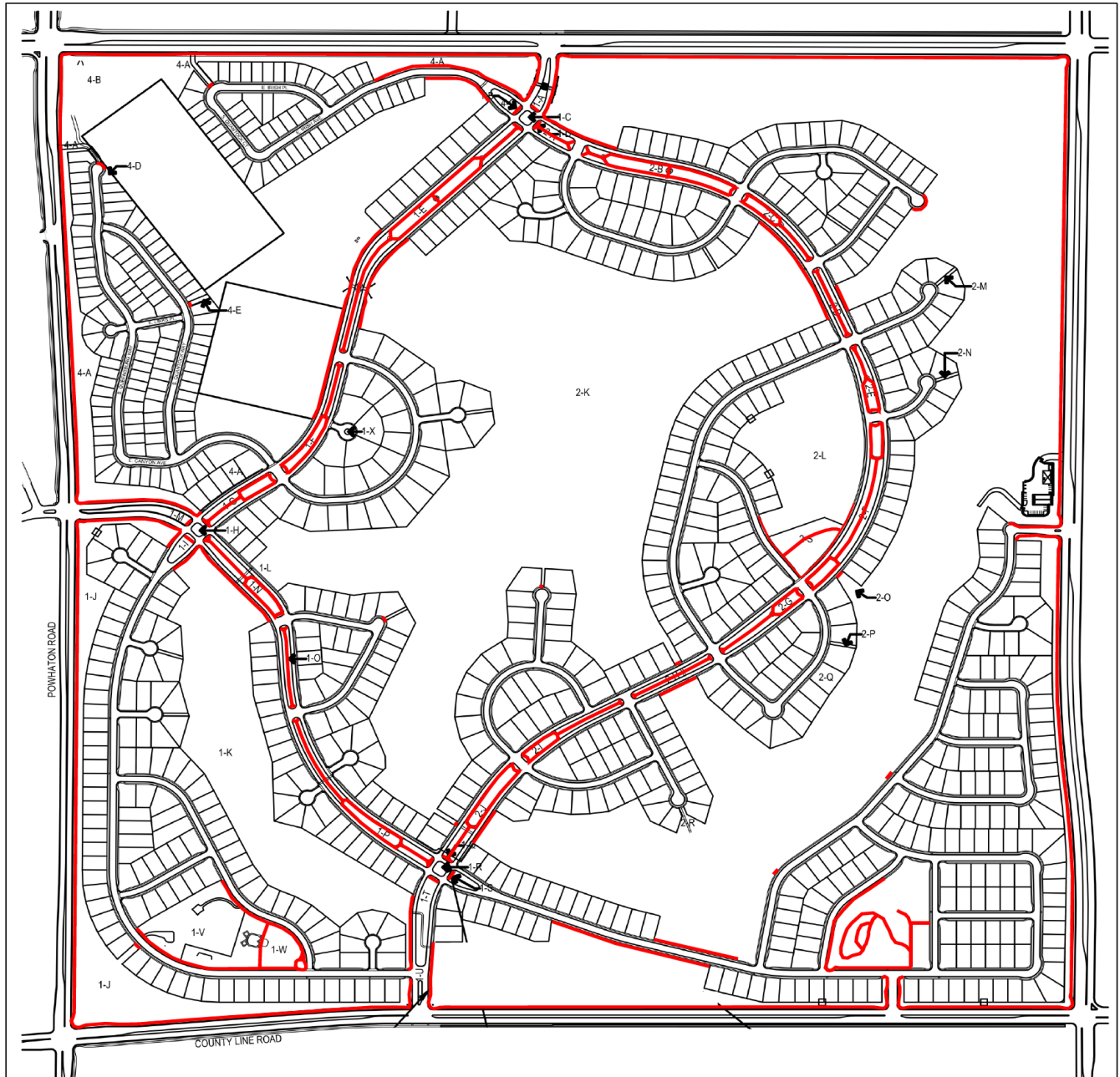


# Blackstone Metro District -2022-2023 Snow Plan

**Common District Areas:** Blackstone Metropolitan District areas (which include sidewalks through the medians, mailbox kiosks, park sidewalks, and the perimeter community sidewalks) will be cleared of snow once the 2" accumulation trigger has been met.

- Snow removal operations will begin once the storm has finished, and if the snow accumulation reached the 2" trigger.
- The interior is completed first, then the exterior, and the mailbox kiosks are completed last.
- The snow removal will be completed using an ATV, truck with plows, and hand shoveled where needed.



**Elementary School 45:** The elementary school is responsible for the yellow highlighted areas on the map below.



**City of Aurora Streets:** The City of Aurora will perform snow removal based on their snow plan. Please use this link [Snow Removal - City of Aurora \(auroragov.org\)](http://auroragov.org) to reference the City's plan for City owned streets.